

All rights reserved
* 版权由坚朗公司所有，严禁翻版和影印。
* 本公司产品已申请中国专利，严禁仿制，违者负法律责任。
* 2013 年 8 月印刷

坚朗®
中国驰名商标



ISO 9001:2008/ FM 78418
BS EN ISO 14001:2004/ EMS 553450
BS OHSAS 18001:2007/ OHS 563601



广东坚朗五金制品股份有限公司
GUANGDONG KINLONG HARDWARE PRODUCTS CO.,LTD

地址 (ADD): 中国广东省东莞市塘厦镇大坪工业区
Daping Industrial Zone, Tangxia Town,
DongGuan City, Guangdong Province, China

电话 (Tel): 0769-82166666 0769-82136666
传真 (Fax): 0769-82955268 0769-82955269
E-mail: mail@kinlong.com

Overseas Sales Dept.:
Tel: +86-769-87943133 +86-769-82166666

大浙赣销售区
电话: 0571-86806535
传真: 0571-86806536
E-mail: hz@kinlong.com

大东北销售区
电话: 024-24323726
传真: 024-24338787
E-mail: sy@kinlong.com

大华东销售区
电话: 021-67639698
传真: 021-67639697
E-mail: sh@kinlong.com

大华北销售区
电话: 010-51265266
传真: 010-61506216
E-mail: bj@kinlong.com

大西北销售区
电话: 0471-6560906
传真: 0471-6560906
E-mail: hhht@kinlong.com

大西南销售区
电话: 028-87317578
传真: 028-87326578
E-mail: chengdu@kinlong.com

大南方销售区
电话: 020-82082049
传真: 020-82082045
E-mail: gz@kinlong.com

大华中销售区
电话: 029-86518834
传真: 029-86518841
E-mail: xa@kinlong.com

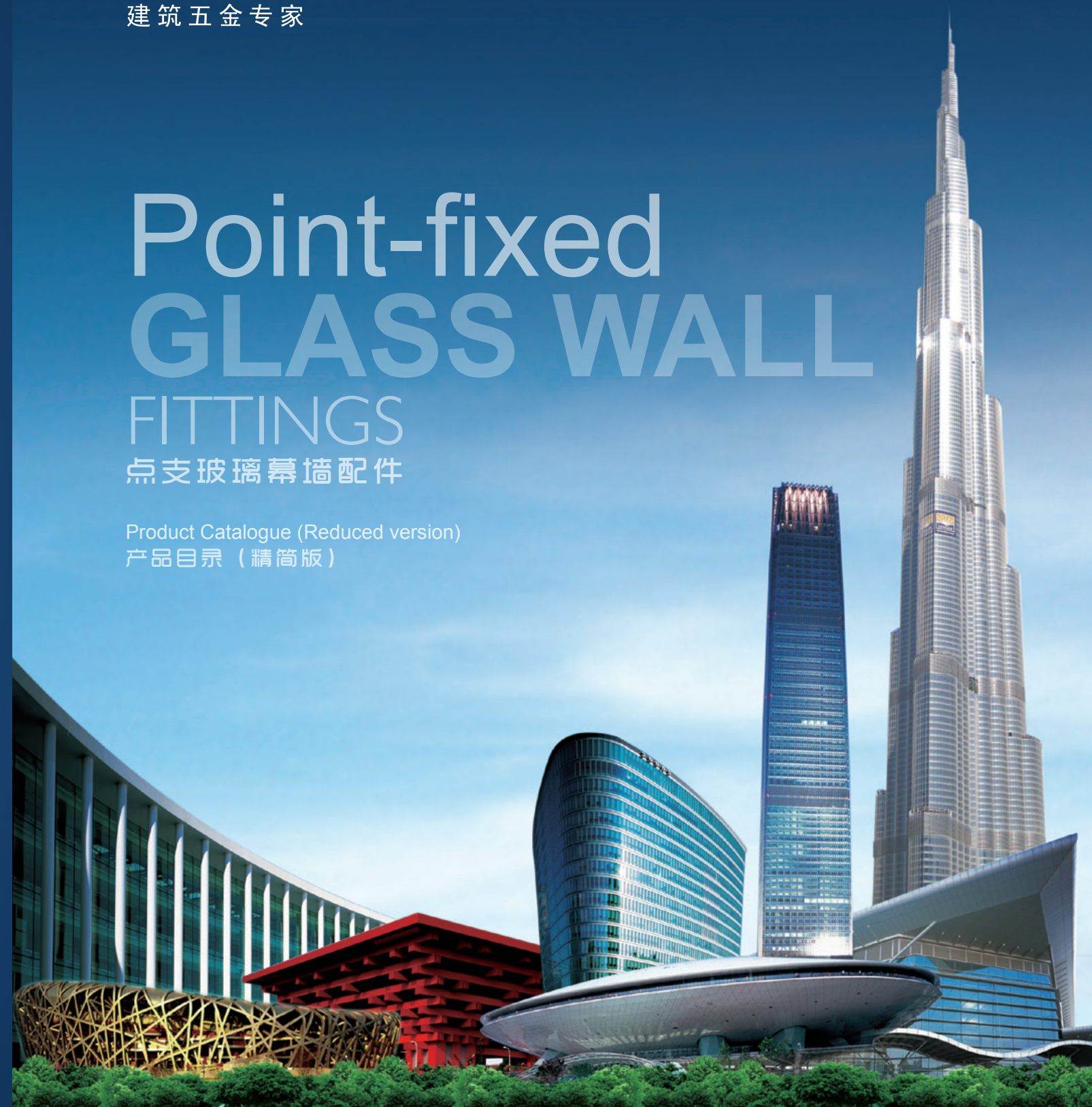
大苏皖销售区
电话: 0512-62584700
传真: 0512-67502117
E-mail: suzhou@kinlong.com

坚朗® KIN LONG®
Construction Hardware Expert
建筑五金专家

Point-fixed GLASS WALL FITTINGS

点支玻璃幕墙配件

Product Catalogue (Reduced version)
产品目录 (精简版)



COMPANY

PROFILE 公司介绍

UNIQUE VALUE CAN ONLY BE CREATED BY
PROFESSIONALISM, SPECULATION HAS NO FUTURE

唯有专业才能创造独特价值
投机没有未来



坚朗公司是从事建筑五金产品研究、制造和销售的专业公司，始终致力于提供高品质的建筑五金产品和相关技术咨询。经过多年的发展，坚朗已成为建筑领域的著名品牌。

坚朗生产基地面积超过20万m²，公司员工总数超过5000人，其中，管理技术人员数量超过500人。公司在国内外设有多个销售服务机构，产品远销100多个国家和地区。

“唯有专业才能创造独特价值，投机没有未来”，多年来，坚朗秉持这一理念并将其坚定地灌输给每一位坚朗人。上至公司高级主管，下至新入职的基层员工，坚朗依靠不断的完善和创新，已成为行业中的佼佼者。

坚朗除采用现代化先进的生产工艺外，还拥有众多专家、设计师从事产品开发与革新，保证坚朗的产品始终保持国际领先水平。目前，坚朗已拥有产品万余种，国内外专利300多项，丰富的产品类型及卓越的创新能力是坚朗不断进步的源源动力。坚朗提供的产品以其先进的设计理念、精美的外观、优良的品质，极大地满足了不同客户的个性化需求，为广大用户所称道。坚朗已为世界各地的众多著名建筑物提供了产品及服务，无数座城市的标志建筑已成为坚朗人的骄傲与辉煌。

对于任何一个明智的、致力于建筑五金工程业务的企业及设计人员来讲，坚朗都将是负责的、可信赖的伙伴。

KIN LONG Company has been an innovative and professional company engaged in research, development, manufacture, and marketing of fittings for architectural hardware. KIN LONG supplies fittings of high quality and provides consulting services to the architectural industry. Through many years' development, KIN LONG achieves a good reputation in construction industry.

KIN LONG has a factory of 200,000sq.m. with a construction area of 200,000sq.m. The total number of employees exceeds 5000, including over 500 technical and managerial personnel. With a developing sales network both home and abroad, its products are distributed through China and exported to more than 100 countries and areas.

Unique value can only be created by professionalism, speculation has no future. This motto is practiced by KIN LONG personnel at all levels, ranging from senior executives to the new entry employees. In the continuous quest for constant technology development, higher quality and better services, today KIN LONG has become the prominent and largest supplier of fittings for architectural hardware industry.

Striving to become the leader to serve the architectural hardware industry in the world, KIN LONG not only adopts advanced management and manufacturing method, but also invests heavily in design and innovation. Till now, KIN LONG has more than 10,000 items of products and owns more than 300 patents in China. Rich product and prominent capability of innovation is the driving force for its progress. The company has achieved acclaim in innovative design, elegant appearance, high quality products and unsurpassed services, greatly meet the individual needs of different customers, widely praised by customers. KIN LONG takes pride in supplying fittings to many famous landmarks in countless cities all over the world.

KIN LONG is always your best and most reliable partner in supplying fittings for architectural hardware.



坚朗工业园
KIN LONG INDUSTRIAL PARK

CONTENTS 目录

01

产品材质说明
Product Material Introduction

01

02

表面处理效果
Surface Finish

02

03

钢结构点支承玻璃幕墙系统
Steel structure point-fixed glass curtain wall system

03

01. 工程案例 Projects collection

02. 系统构造 System structure

03. 常用产品 Commonly used products

04

肋板结构点支承玻璃幕墙系统
Fin glass structure point-fixed curtain wall system

12

01. 工程案例 Projects collection

02. 系统构造 System structure

03. 常用产品 Commonly used products

05

单层索结构点支承玻璃幕墙系统
Single-cable structure point-fixed glass curtain wall system

20

01. 工程案例 Projects collection

02. 系统构造 System structure

03. 常用产品 Commonly used products

06

索桁架结构点支承玻璃幕墙系统
Cable truss structure point-fixed glass curtain wall system

27

01. 工程案例 Projects collection

02. 系统构造 System structure

03. 常用产品 Commonly used products

07

不锈钢拉索
Stainless steel tension cable

29

08

不锈钢拉杆
Stainless steel tension rod

32

产品材质
PRODUCT MATERIAL

- 一. 铸造类不锈钢产品:
Cast stainless steel material:

● 标准材质: CF8M、CF8 (ASTM A743/A743M)

● 常用材质: CD3MN (ASTM A890/A890M)

● 非标材质: 客户要求的其它材质 (主要指与 CF8M、CF8 材质相近的其它材质)

● The standard material: CF8M、CF8 (ASTM A743/A743M)

● Commonly used material: CD3MN (ASTM A890/A890M)

● Nonstandard material: other materials which requested by clients (mainly referring to materials which are similar to the CF8、CF8M)

注: CF8M、CF8 材质常用产品备有大量库存, 供货期较短; 其它材质供货期略长。

Note: CF8M、CF8 material commonly used products with a large number of stock, delivery time is shot, the other material delivery time would be a little long.
- 二. 型材加工类不锈钢产品:
Stainless steel bars and shapes material

● 标准材质: 316、304 (ASTM A276)

● 常用材质: 2205 (ASTM A276)

● 非标材质: 客户要求的其它材质 (主要指与 304、316 材质相近的其它材质)。

● The standard material: 316、304 (ASTM A276)

● Commonly used material : 2205 (ASTM A276)

● Nonstandard material: other materials which requested by clients (mainly referring to materials which are similar to the 304, 316)

注: 316、304 材质常用产品备有大量库存, 供货期较短; 其它材质供货期略长。

Note: 316、304 material commonly used products with a large number of stock, delivery time is shot ,the other material delivery time would be a little long.
- 三、使用说明:
Instruction:

不锈钢所指的“不锈”指的是其在大气、水、酸、碱、盐等溶液或其他腐蚀介质中具有一定化学稳定性, 不易腐蚀和生锈, 但并不是完全不会生锈。是否生锈受到其分子结构、加工工艺、使用环境等各因素的影响。为最大程度的避免不锈钢生锈, 应注意以下几点:

The non rust of the stainless steel means it can have certain chemical stablity around the corrosion mediums of air、water、acid、alkali、salt or others. But it does not mean the stainless steel will never rust. Whether the stainless steel will rust or not is influenced by the molecular structures, the processing technic, the operating environment and so on. To prevent the stainless steel from rusting extremely, please pay attention to the following factors:

● 铸造件应按要求进行固溶处理

● 应根据使用环境合理选用不锈钢牌号

● 选用相对光滑的表面处理方式

● 施工中应做好产品防护措施

● 产品的设计和应用应避免积灰、积水

● 定期对产品进行清洁, 避免长期脏污

● The die and casting parts should be carried out the solution treatment according to requirements.

● Choosing the reasonable stainless steel mark according to the operating environment .

● Selecting the smooth surface treatment.

● Taking protection measures of hardware products into action on site.

● Taking protection measures of hardware products should avoid soot formation and seeper.

● Cleaning the hardware regularly to avoid long time being smudged.

不锈钢点支配件表面处理效果

The surface finish of the stainless steel accessories for the point-fixed glass curtain wall



亚光
satin



镜光
mirror



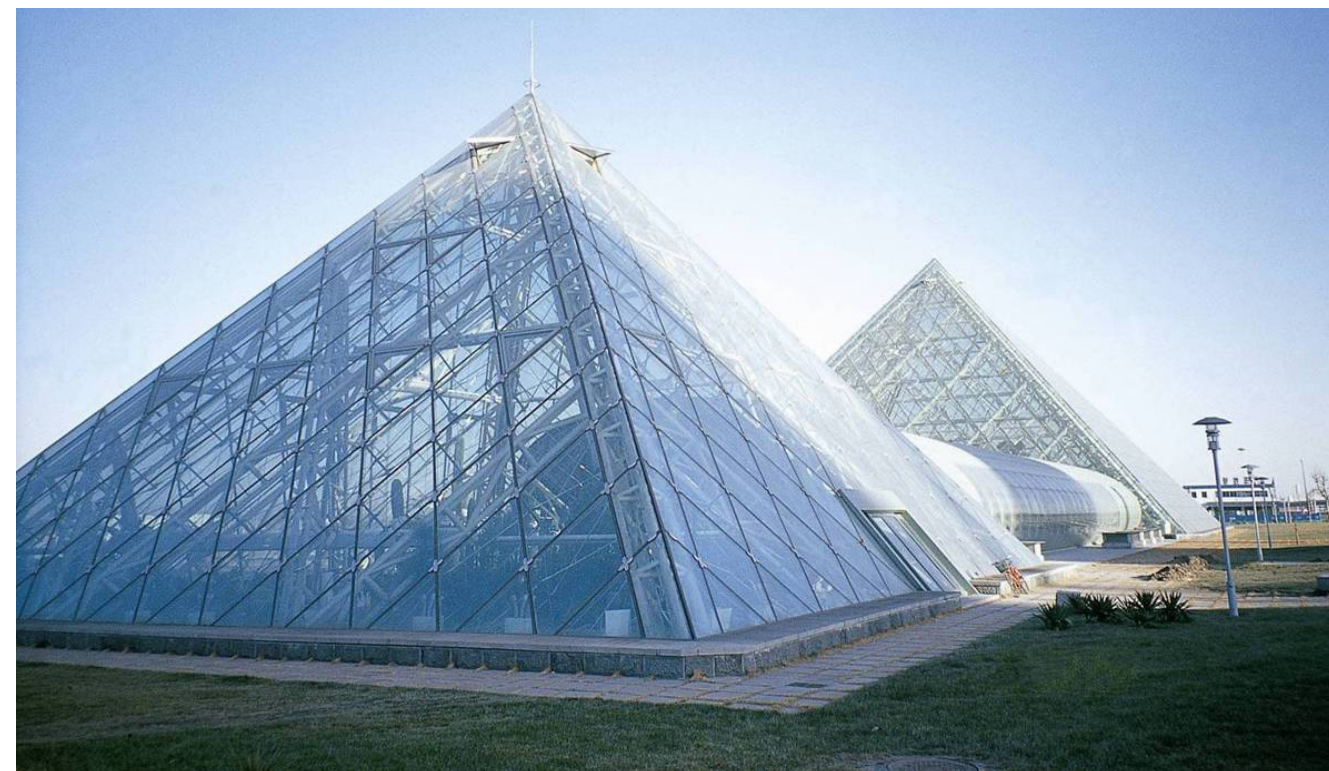
珍珠砂
pearl sand finish

注：本页为我公司产品常见的表面处理效果。如有特殊表面处理要求，请与我们联系。

Note: This page shows the standard surface finish effect of our company. If any special requirement of the surface finish is requested, please contact us.

钢结构点支承玻璃幕墙系统

Steel structure point-fixed glass curtain wall system

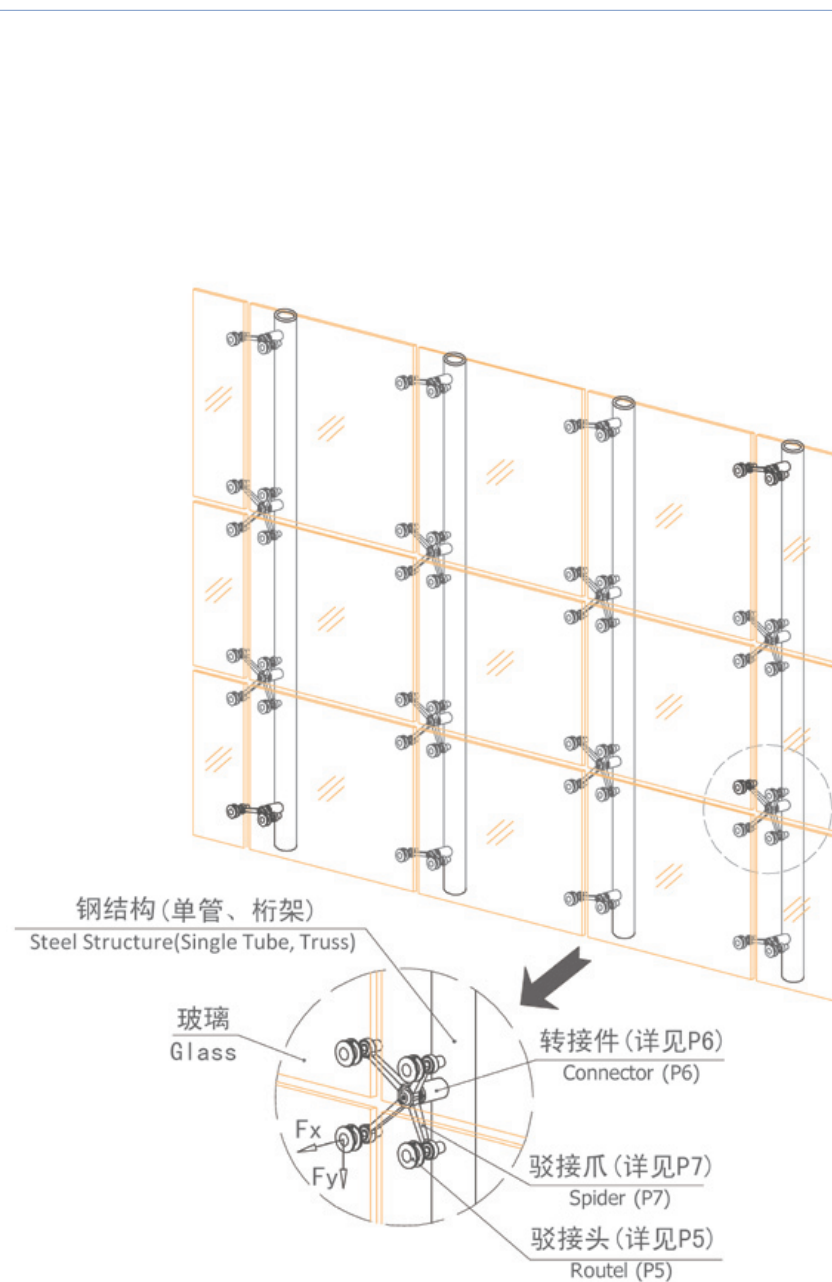


钢结构点支承玻璃幕墙系统

Steel structure point-fixed glass curtain wall system

系统构造 (一)

System structure (I)



图中 Fx、Fy 分别代表玻璃传递给点支承配件的轴向力与径向力。

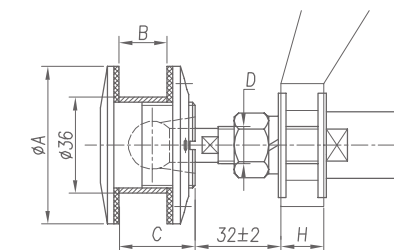
Fx and Fy represent axial and radial forces which the glass pass to point-fixed accessories.

驳接头尺寸及承载力参数

The size and capacity parameter of the routel



TF (浮头式 Flat cap)

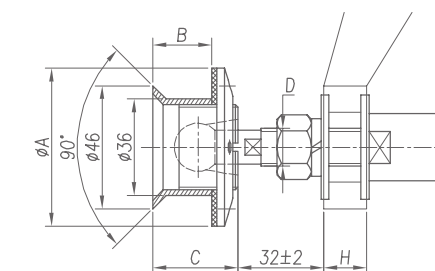


型号 Model	A	B	C	D	可偏转角度不小于 To deflect angle is not less than ★★	承载力 推荐值 (N) The recommended value of bearing capacity(N)	Fx(轴向 Axial) ≤	Fy(径向 Radial) ≤
TF11/TF11A	59	8~18	28	M14	±5° / ±10°	The recommended value of bearing capacity(N)	4500	2000
TF12/TF12A	59	18~26	36	M14	±5° / ±10°		4500	2000
TF13/TF13A	59	26~40	50	M16	±5° / ±10°		6000	2500
TF21/TF21A	70	8~22	32	M16	±5° / ±10°		6000	2500
TF22/TF22A	70	22~30	40	M16	±5° / ±10°		6000	2500
TF23/TF23A	70	30~40	50	M16	±5° / ±10°		6000	2500

注: TF21(A) / TF22(A) / TF23(A) 主要用于夹持中空玻璃。

Note:TF21(A) / TF22(A) / TF23(A) mainly used for clamp insulated glass.

TC (沉头式 Counte rsunk)



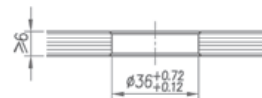
型号 Model	A	B	C	D	可偏转角度不小于 To deflect angle is not less than ★★	承载力 推荐值 (N) The recommended value of bearing capacity(N)	Fx(轴向 Axial) ≤	Fy(径向 Radial) ≤
TC11/TC11A	59	8~22	32	M14	±5° / ±10°	The recommended value of bearing capacity(N)	4500	2000
TC12/TC12A	59	22~30	40	M14	±5° / ±10°		4500	2000
TC13/TC13A	59	30~40	50	M16	±5° / ±10°		6000	2500
TC21/TC21A	70	8~22	32	M16	±5° / ±10°		6000	2500
TC22/TC22A	70	22~30	40	M16	±5° / ±10°		6000	2500
TC23/TC23A	70	30~40	50	M16	±5° / ±10°		6000	2500

注: TC21(A) / TC22(A) / TC23(A) 主要用于夹持中空玻璃。

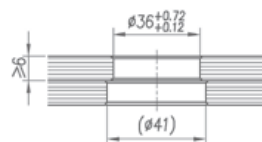
Note:TC21(A) / TC22(A) / TC23(A) mainly used for clamp insulated glass.

玻璃开孔参考图 Reference Drawing for the hole drilling

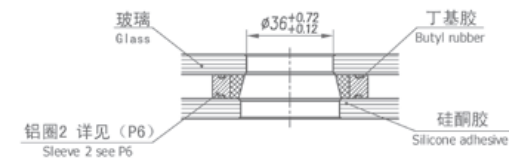
适用于 Suitable for: TF11(A)、TF12(A)、TF21(A)、TF22(A)



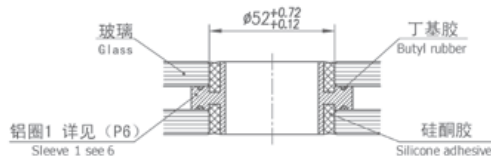
适用于 Suitable for: TF11(A)、TF12(A)、TF13(A)、TF21(A)、TF22(A)、TF23(A)



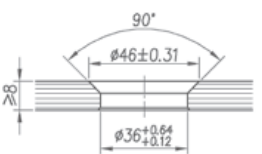
适用于 Suitable for: TF13(A)、TF23(A)



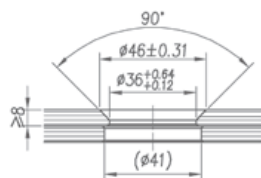
适用于 Suitable for: TF13(A)、TF23(A)



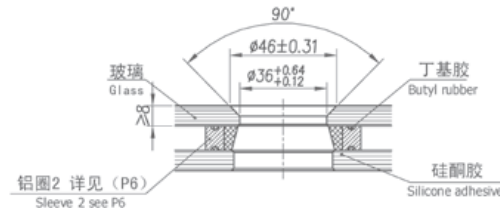
适用于 Suitable for: TC11(A)



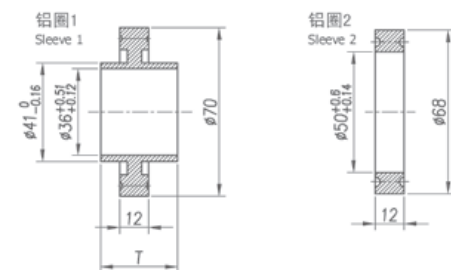
适用于 Suitable for: TC11(A)、TC12(A)、TC13(A)、TC21(A)、TC22(A)、TC23(A)



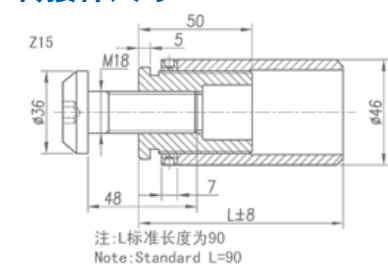
适用于 Suitable for: TC13(A)、TC22(A)、TC23(A)



中空玻璃用铝圈 Alu sleeve for IGU



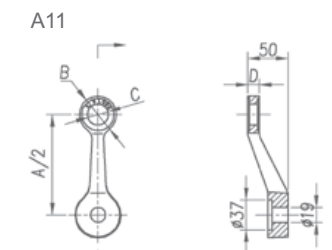
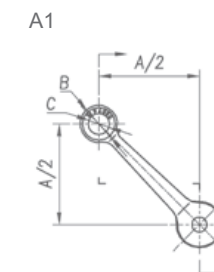
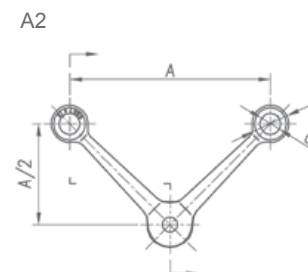
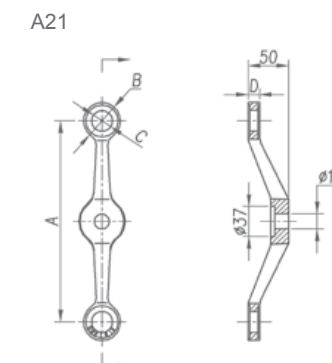
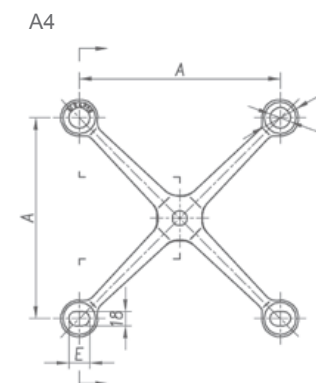
转接件尺寸 The size of connector



注：转接件底座材质为碳素结构钢 Q235，若需要不锈钢时，请在转接件代号的末尾加注“B”。

Note: The material of connector base is the carbon steel Q235, if the material of stainless steel is needed, please add "B" to the end of the connector code .

驳接爪尺寸及承载力参数 Size and capacity parameter of the spider



规格尺寸 Specification	系列号 Series number	A	B	C	D	E	承载力 推荐值 (N) The recommended value of bearing capacity(N)	Fx(轴向 Axial) ≤	Fy(径向 Radial) ≤
	200	200	42	24	14	24		2000	1000
	220	220	42	26	12	26		2000	1200
	250	250	46	26	14	26		2500	1500

注：驳接爪型号由“系列号+爪臂代号”组成，爪臂代号位于产品图左上角，如 220A4、250A11 等。

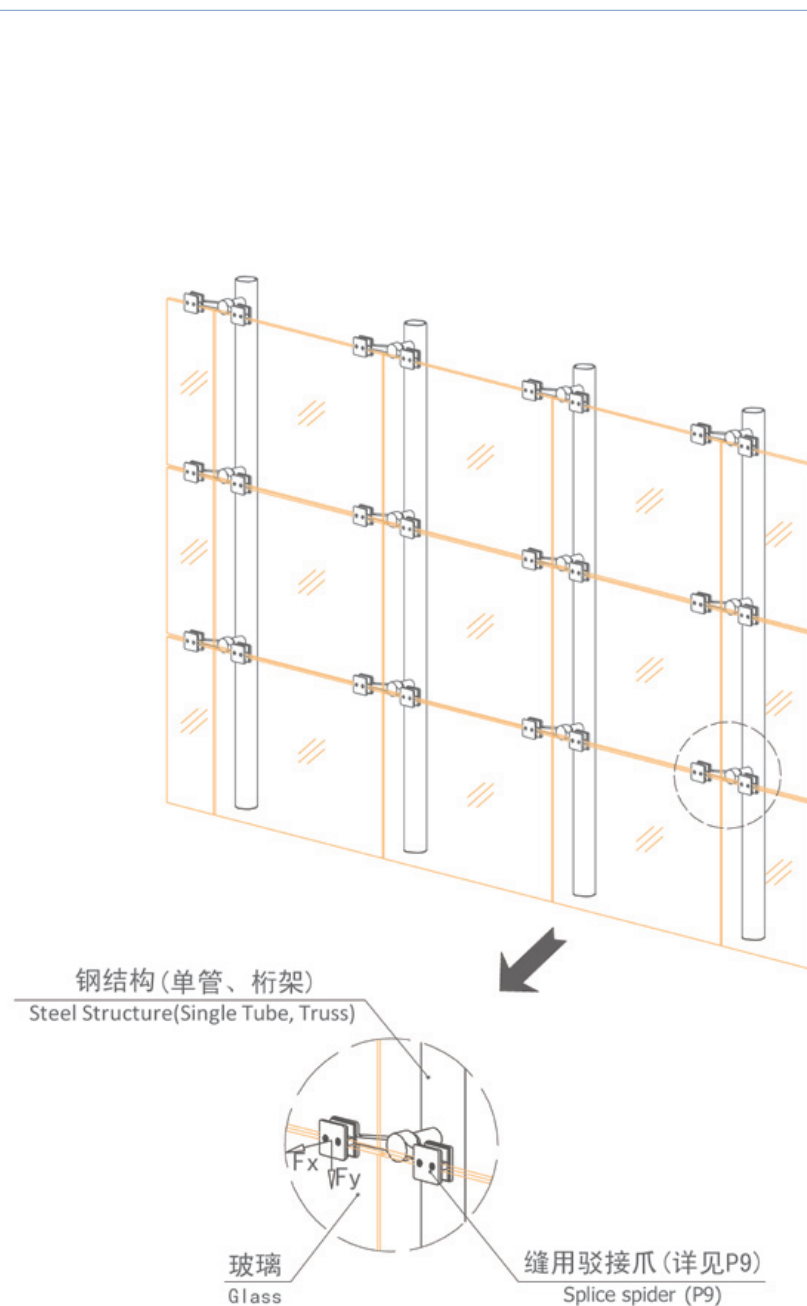
Note: Spider models consists of series number and spider arm code.the spider arm code on the upper left corner of the product drawing.such as 220A4, 250A11

钢结构点支承玻璃幕墙系统

Steel structure point-fixed glass curtain wall system

系统构造 (二)

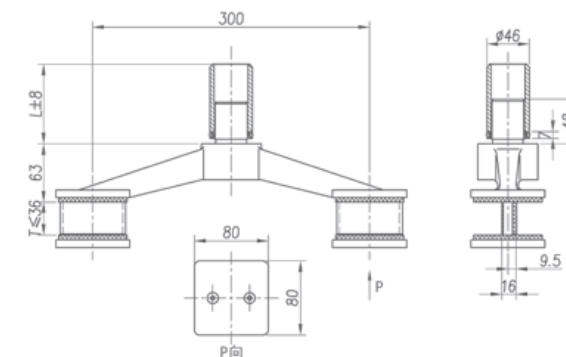
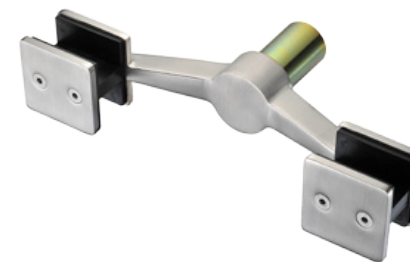
System structure (II)



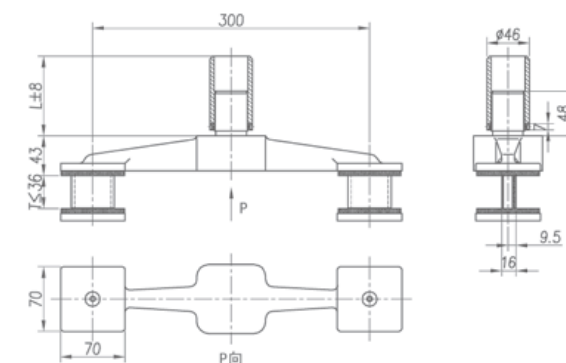
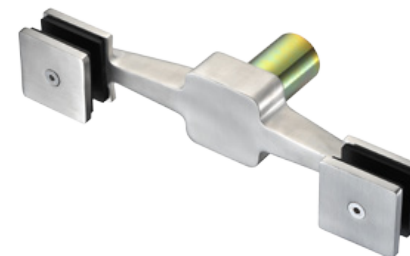
缝用驳接爪尺寸及承载力参数

The size and capacity parameter of the splice spider

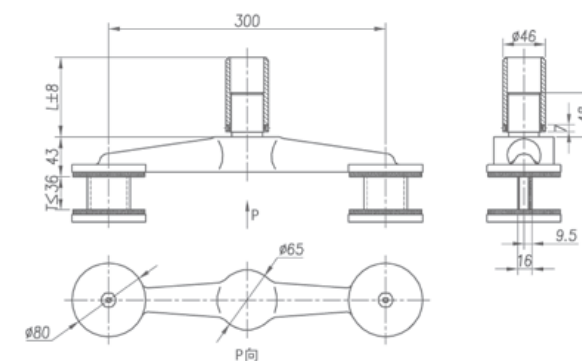
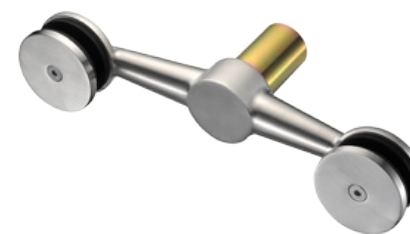
J300A11



J300B11



J300C11



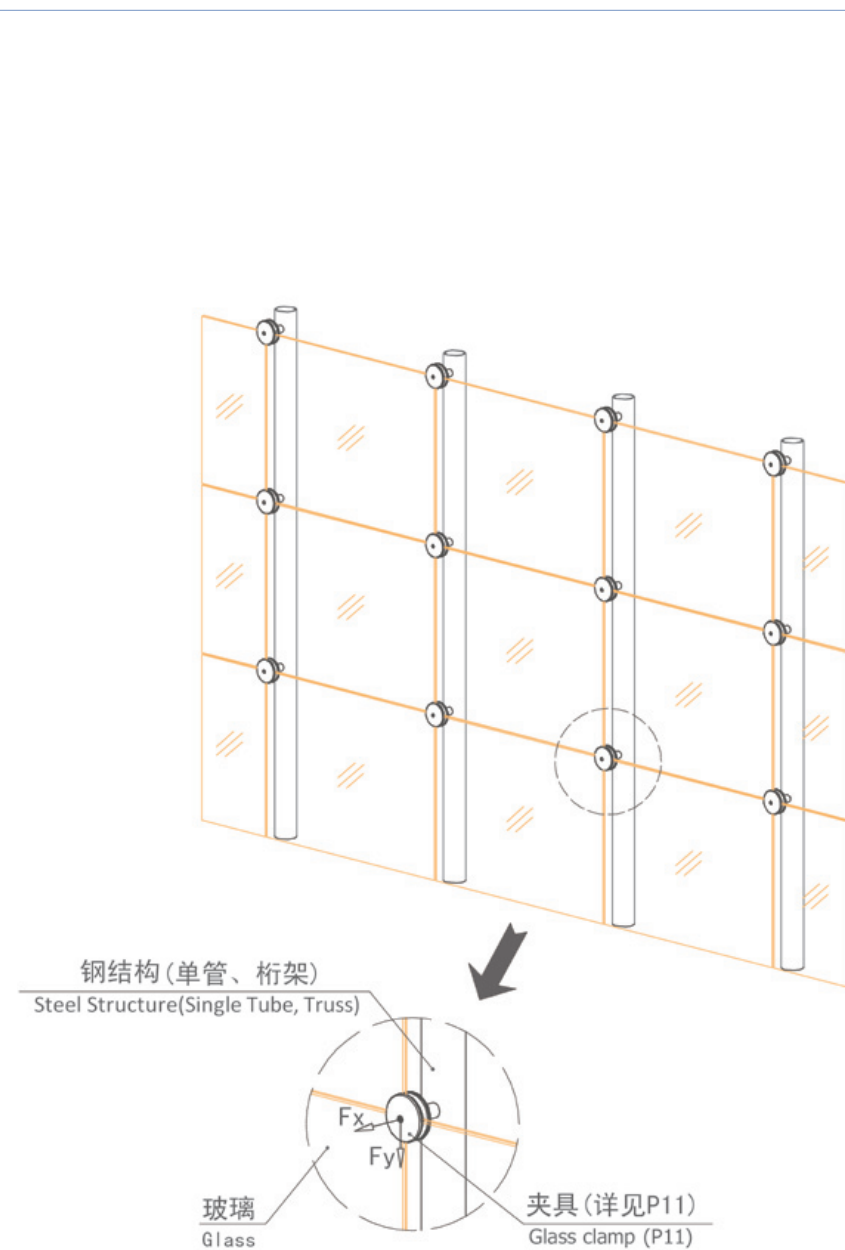
承载力 推荐值 (N) The recommended value of bearing capacity(N)	型号 Model	J300A11	J300B11	J300C11
F_x (轴向 Axial)≤		10000	10000	10000
F_y (径向 Radial)≤		5000	5000	5000

钢结构点支承玻璃幕墙系统

Steel structure point-fixed glass curtain wall system

系统构造（三）

System structure (III)



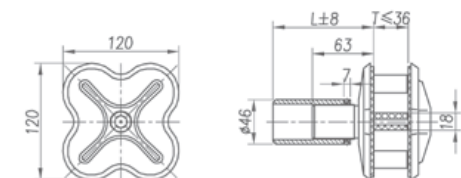
图中 F_x 、 F_y 分别代表玻璃传递给点支配件的轴向力与径向力。

F_x and F_y represent axial and radial forces which the glass pass to point-fixed accessories.

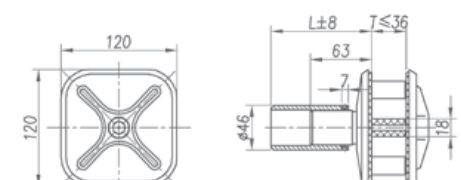
夹具尺寸及承载力参数

The size and capacity parameter of the splice spider

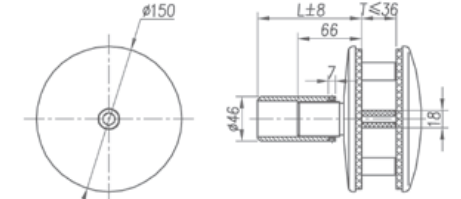
J120A11



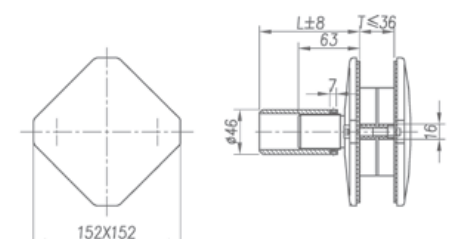
J120B11



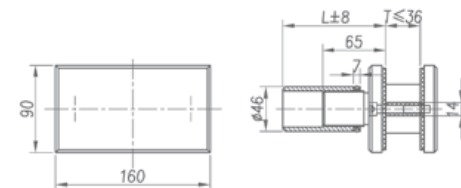
J150A11



J152A11



J160A11



承载力 推荐值 (N) The recommended value of bearing capacity(N)	型号 Model	J120A11	J120B11	J150A11	J152A11	J160A11
	Fx(轴向 Axial)≤	20000	20000	20000	20000	20000
	Fv(径向 Radial)≤	3000	3000	4000	4000	4000

肋板结构点支承玻璃幕墙系统

Fin glass structure point-fixed curtain wall system

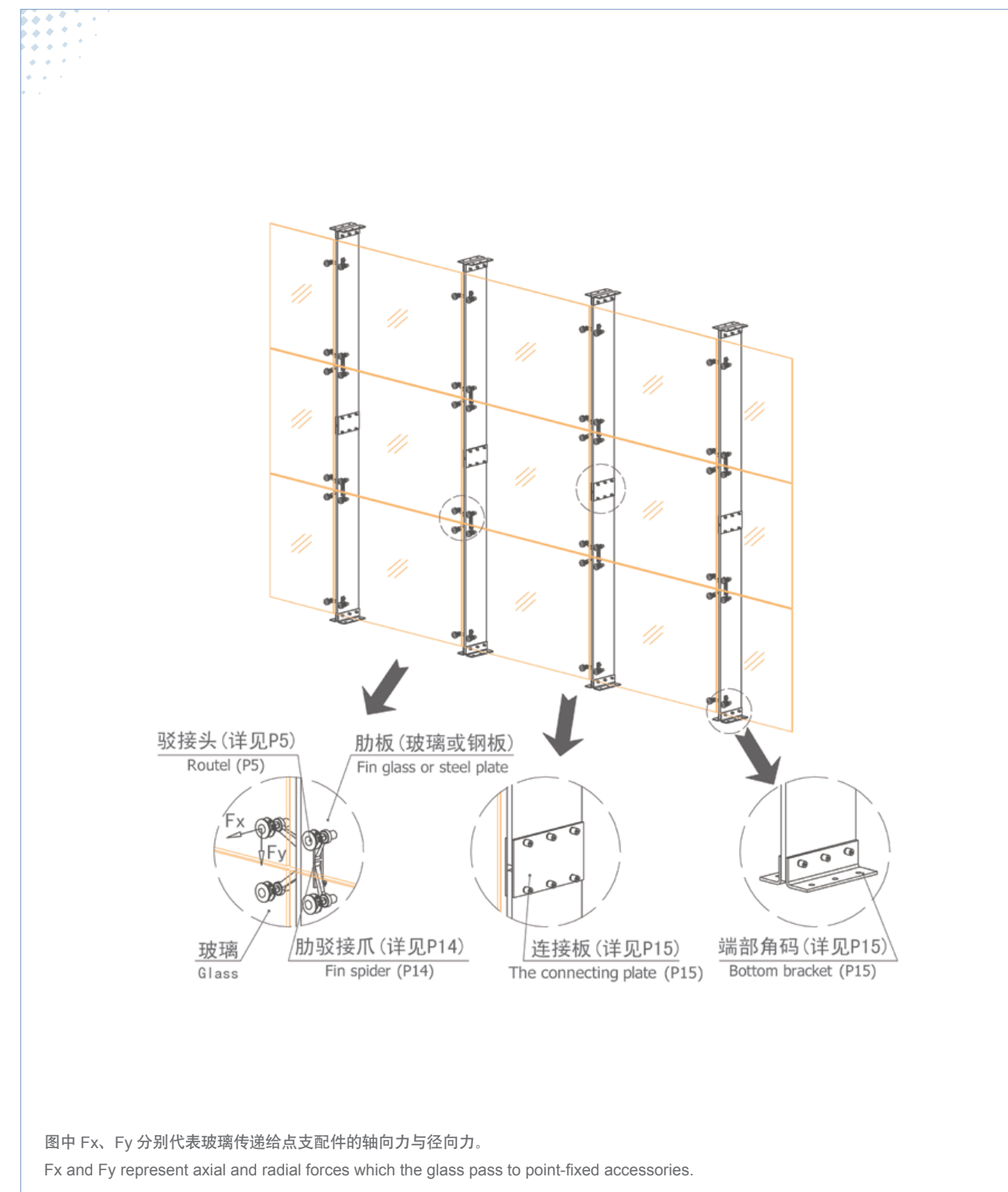


肋板结构点支承玻璃幕墙系统

Fin glass structure point-fixed curtain wall system

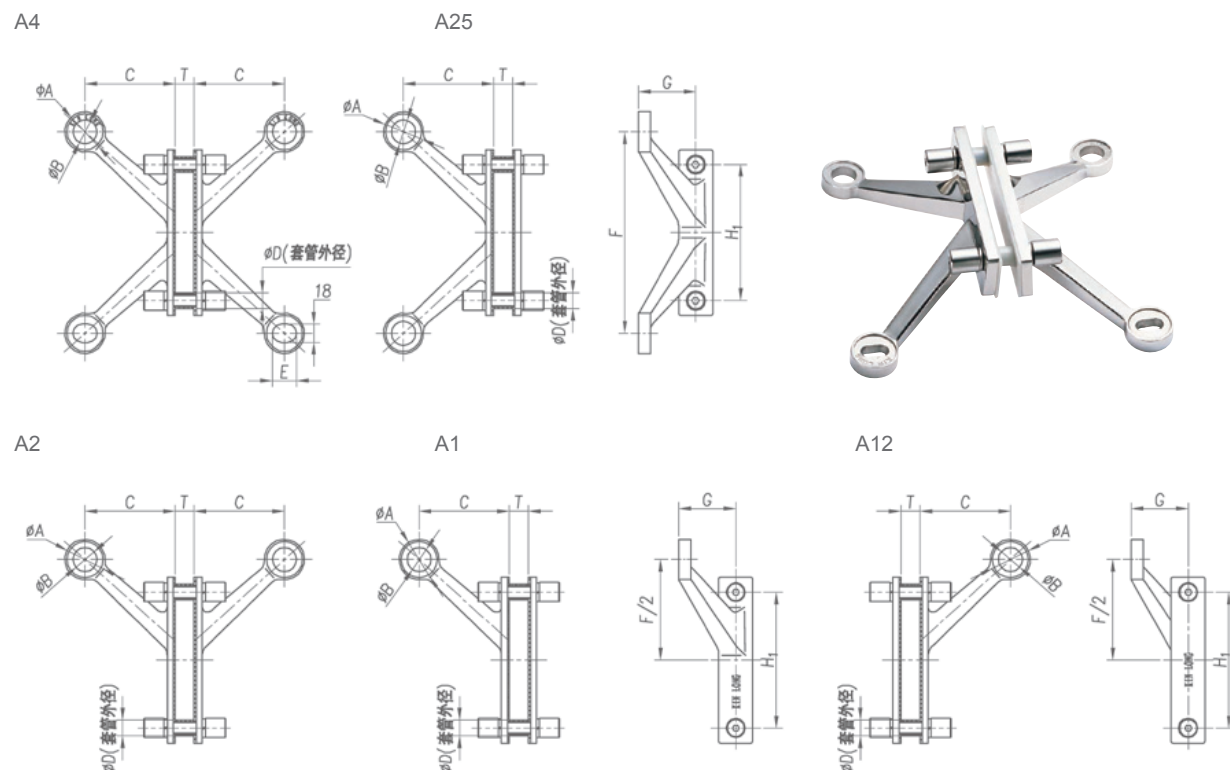
系统构造 (一)

System structure (I)



肋驳接爪尺寸及承载力参数

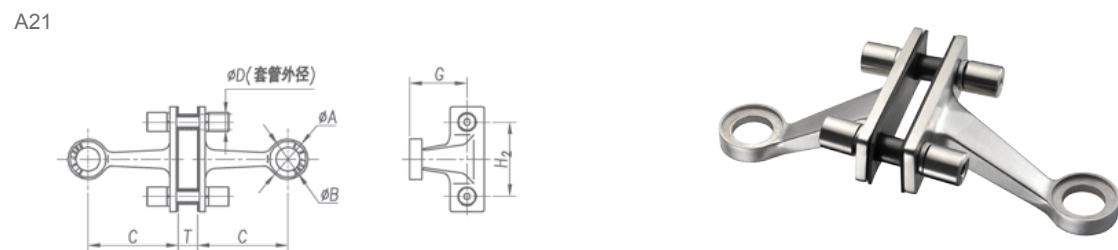
The size and capacity parameter of the fin spider



规格尺寸 Specification	系列号 Series number	A	B	C	D	E	F	G	H ₁	H ₂	承载力 推荐值 (N) The recommended value of bearing capacity(N)	Fx(轴向 Axial) ≤	Fy(径向 Radial) ≤
	L200	40	24	90	15.5	24	200	57	135	74		2000	1000
	L220	46	26	97	19.5	26	220	80	144	94		2500	1500
	L250	46	26	119	19.5	26	250	80	144	94		2500	1500

注：驳接爪型号由“系列号+爪臂代号”组成，爪臂代号位于产品图左上角，如 L220A4、L250A11 等。

Note: Spider models consists of series number and spider arm code, the spider arm code on the upper left corner of the product drawing, such as L220A4, L250A11



连接件尺寸

The size of the connecting plate



BL71: A=6

BL75: A=8



BL72: A=6

BL76: A=8



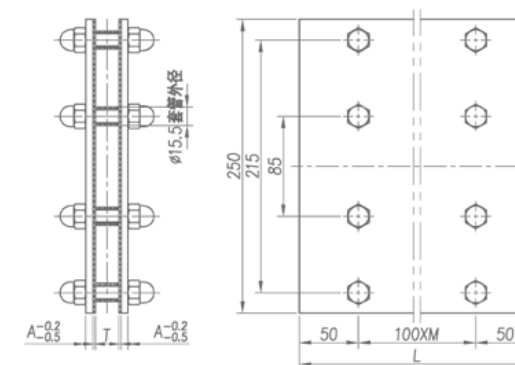
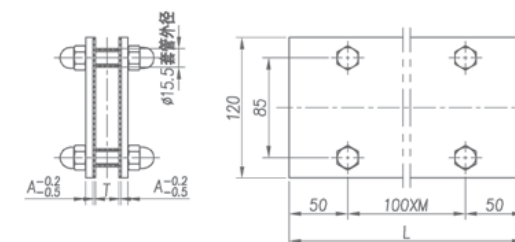
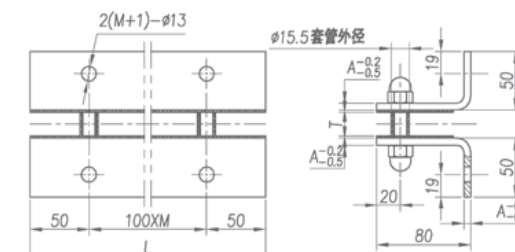
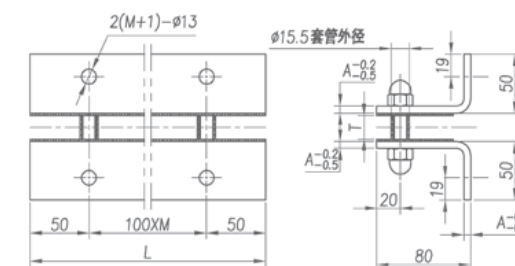
BL73: A=6

BL77: A=8



BL74: A=6

BL78: A=8



注：1.M=(L-100)/100

2.L 为客户肋玻宽度，M 为整数

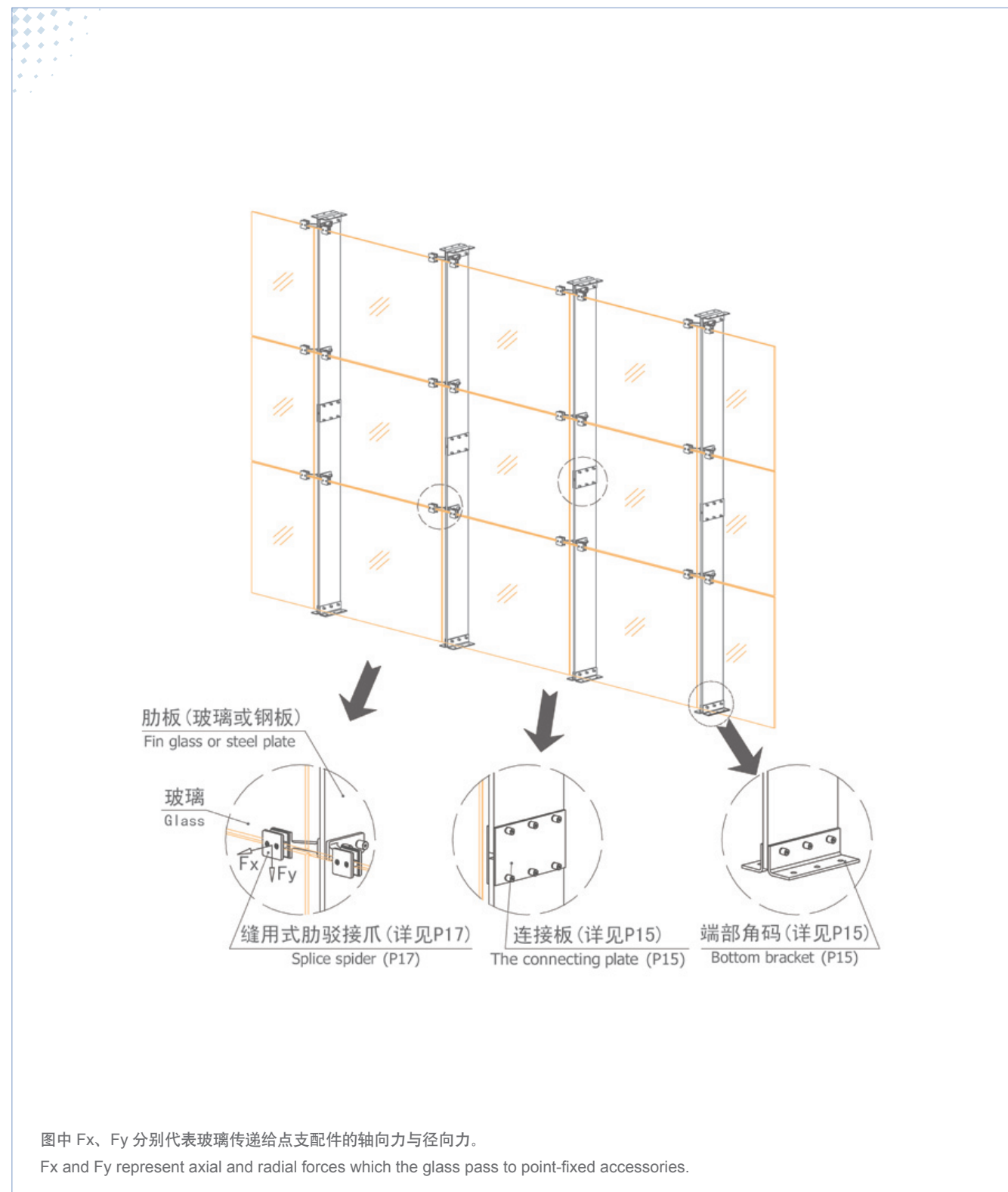
Note: L for Fin glass width, M is Integer

肋板结构点支承玻璃幕墙系统

Fin glass structure point-fixed curtain wall system

系统构造 (二)

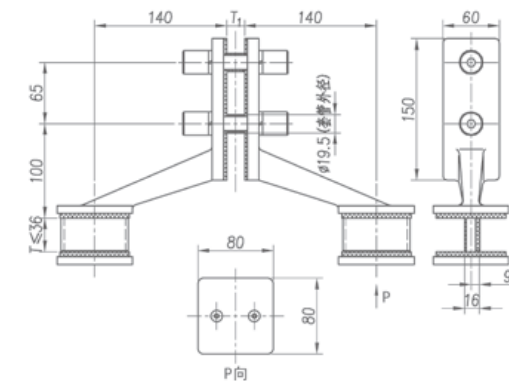
System structure (II)



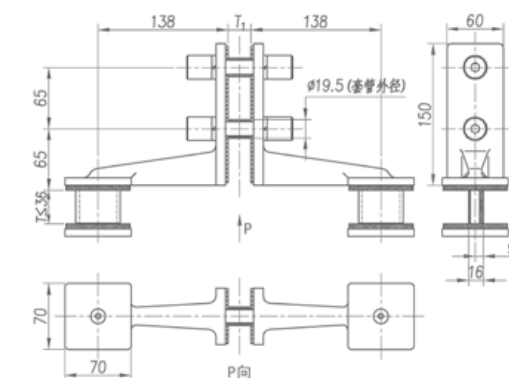
缝用式肋驳接爪尺寸及承载力参数

The size and capacity parameter of the splice fin spider

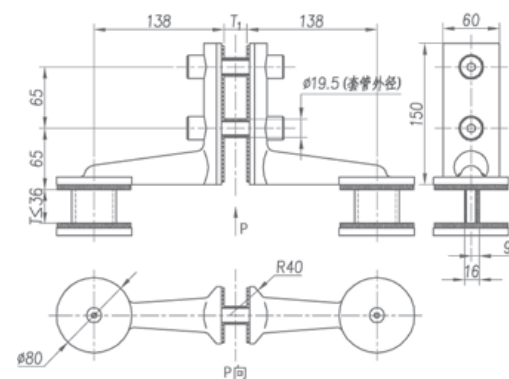
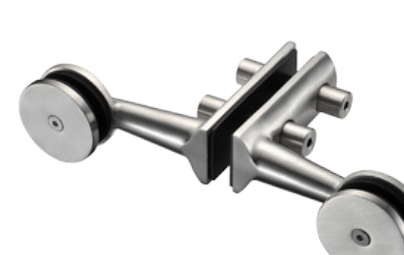
J300A71



J300B71



J300C71



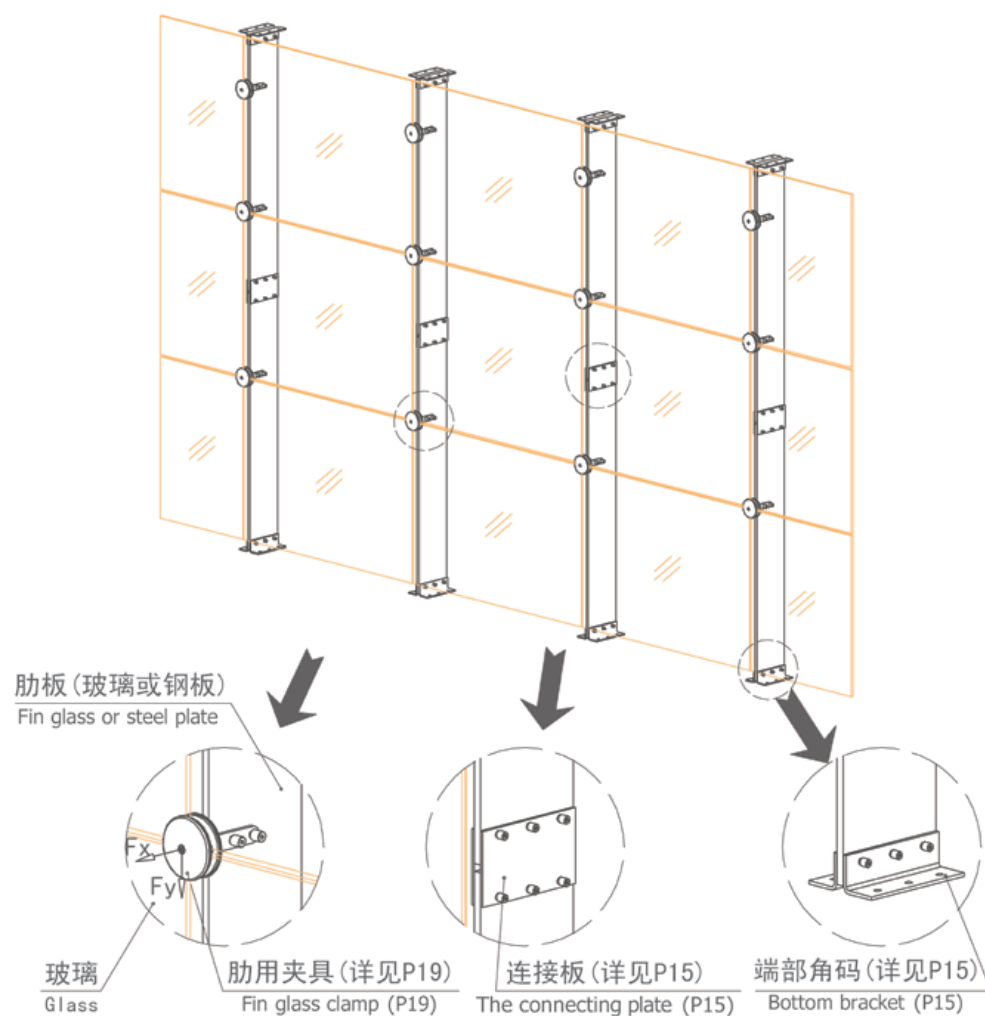
承载力 推荐值 (N) The recommended value of bearing capacity(N)	型号 Model	J300A71	J300B71	J300C71
F_x (轴向 Axial)≤		10000	10000	10000
F_y (径向 Radial)≤		5000	5000	5000

肋板结构点支承玻璃幕墙系统

Fin glass structure point-fixed curtain wall system

系统构造 (三)

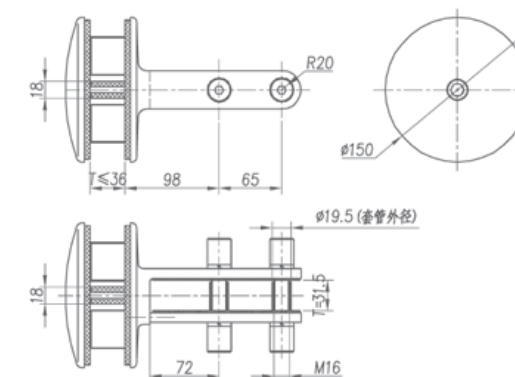
System structure (III)



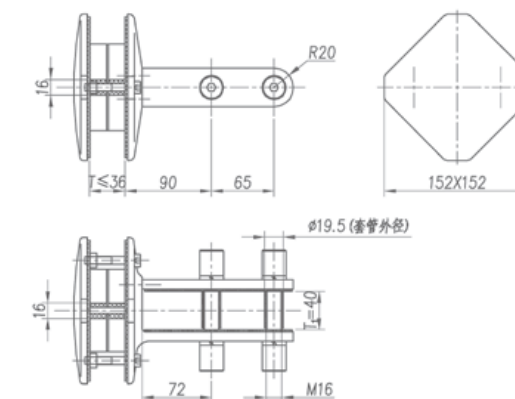
肋用夹具尺寸及承载力参数

The size and bearing capacity parameter of the fin glass clamp.

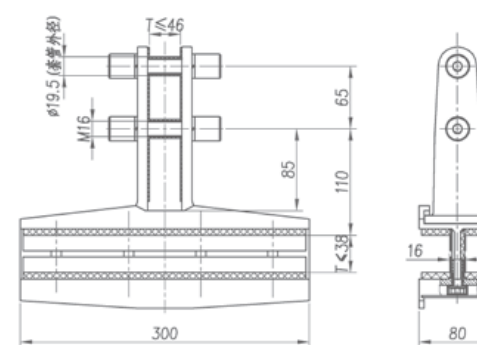
J150A71



J152A71



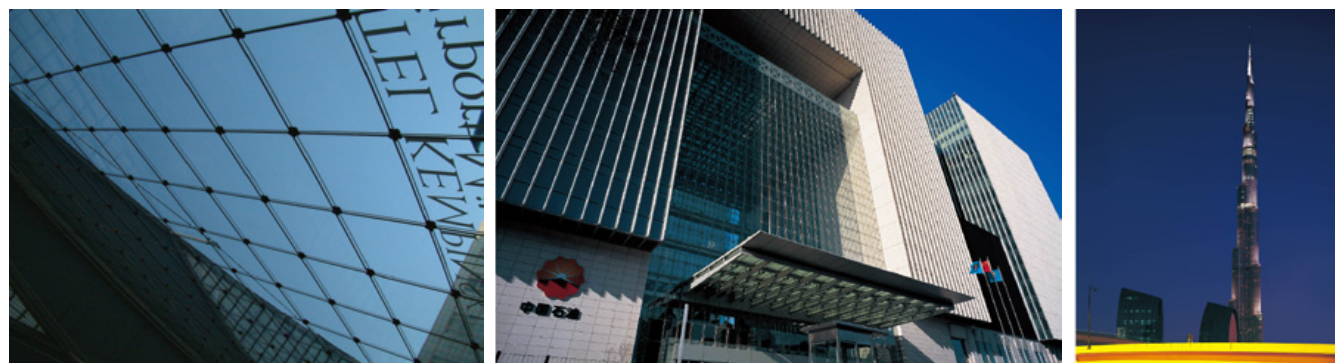
J308L



承载力 推荐值 (N) The recommended value of bearing capacity(N)	型号 Model	J150A71	J152A71	J308L
F_x (轴向 Axial)≤		20000	20000	30000
F_y (径向 Radial)≤		4000	4000	8000

单层索结构点支承玻璃幕墙系统

Single-Cable structure for point-fixed glass curtain wall system

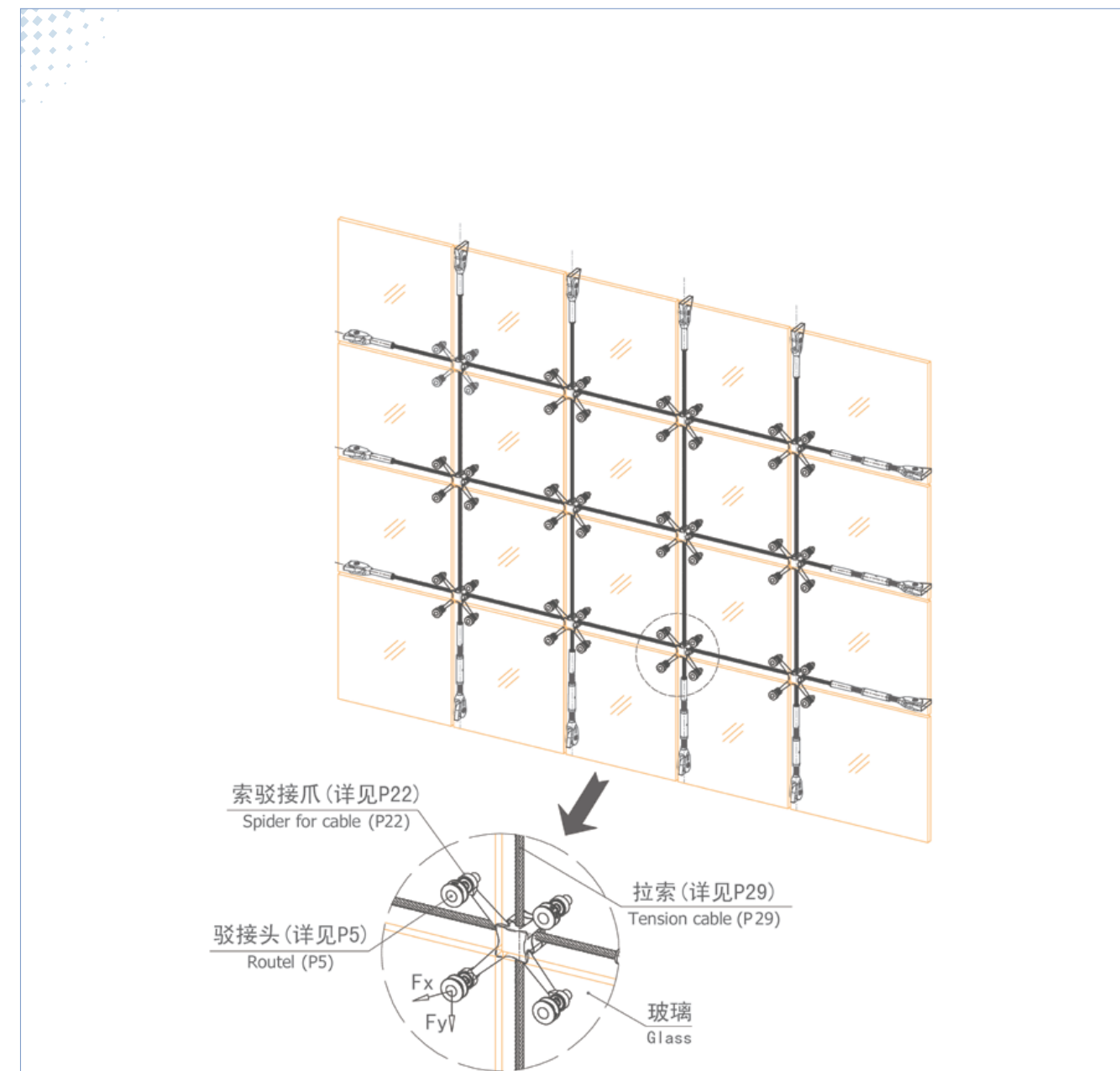


单层索结构点支承玻璃幕墙系统

Single-Cable structure for point-fixed glass curtain wall system

系统构造 (一)

System structure (I)

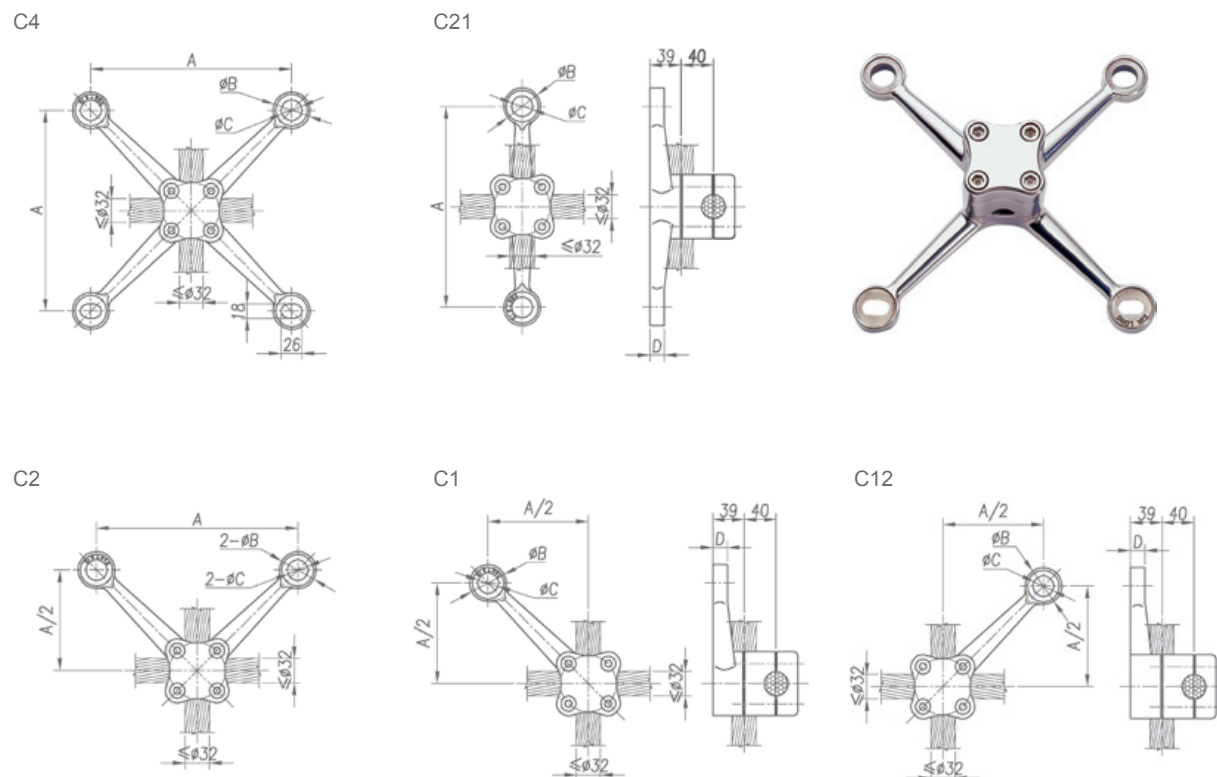


图中 F_x 、 F_y 分别代表玻璃传递给点支配件的轴向力与径向力。

F_x and F_y represent axial and radial forces which the glass pass to point-fixed accessories.

索驳接爪尺寸及承载力参数

The size and bearing capacity parameter of the cable spider



规格尺寸 Specification	系列号 Series number	A	B	C	D	承载力 推荐值 (N) The recommended value of bearing capacity(N)	Fx(轴向 Axial) <	Fy(径向 Radial) <
	S250	250	46	26	18		2500	1500
	S300	300	46	26	20		3000	2000

注：驳接爪型号由“系列号+爪臂代号”组成，爪臂代号位于产品图左上角，如 S250C4、S300C21 等。

Note: Spider models consists of series number and spider arm code, the spider arm code on the upper left corner of the product drawing, such as S250C4, S300C21.

压索螺栓扭矩 Torque of the cable-pressing bolts:

$$T=1.3fd/n$$

式中 T — 单个螺栓扭矩 (N·mm) Torque for single bolt (N. mm);

f — 配件在工程节点中需承受的摩擦力 (N) Friction force of the accessories (N);

d — 压索螺栓公称直径 (mm) Diameter of the cable-pressing bolts (mm);

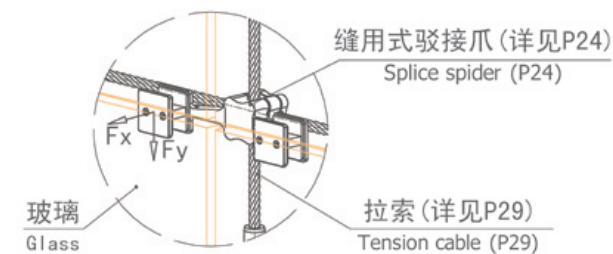
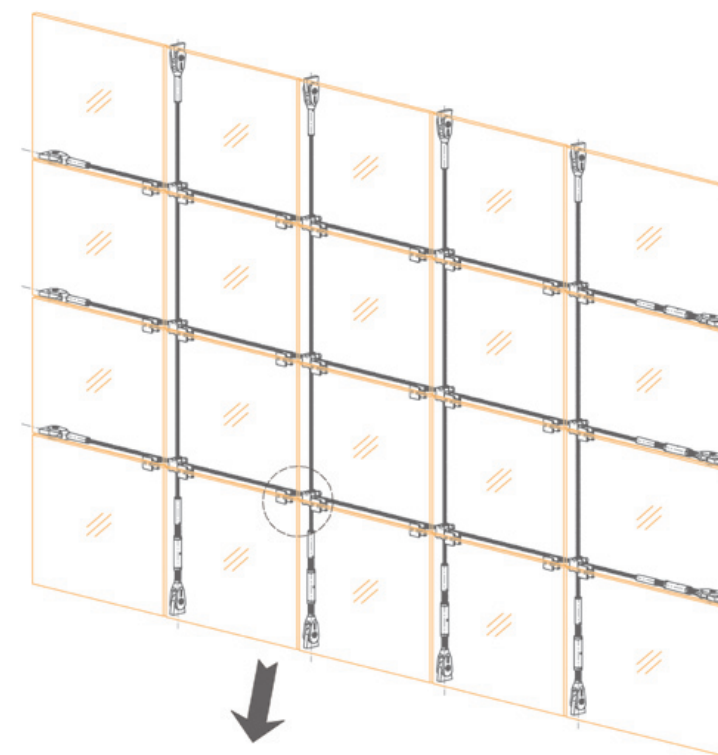
n — 压索螺栓数目 Quantity of the cable-pressing bolt.

单层索结构点支承玻璃幕墙系统

Single-Cable structure for point-fixed glass curtain wall system

系统构造 (二)

System structure (II)

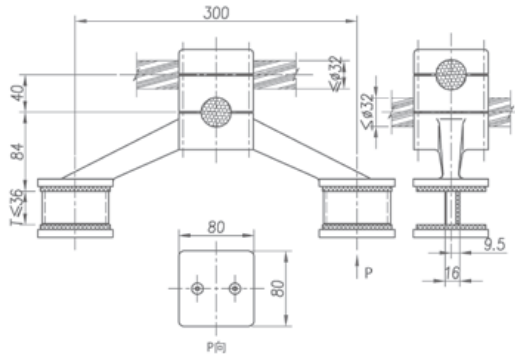
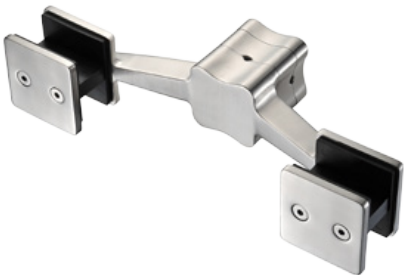


图中 Fx、Fy 分别代表玻璃传递给点支配件的轴向力与径向力。

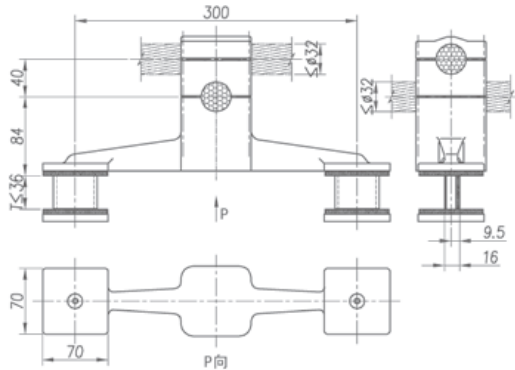
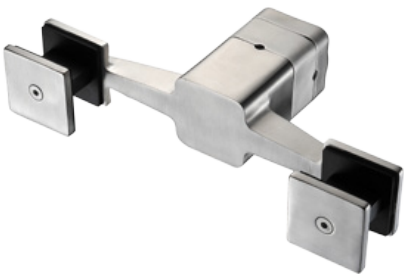
Fx and Fy represent axial and radial forces which the glass pass to point-fixed accessories.

缝用式驳接爪尺寸及承载力参数
The size and bearing capacity parameter of the splice spider

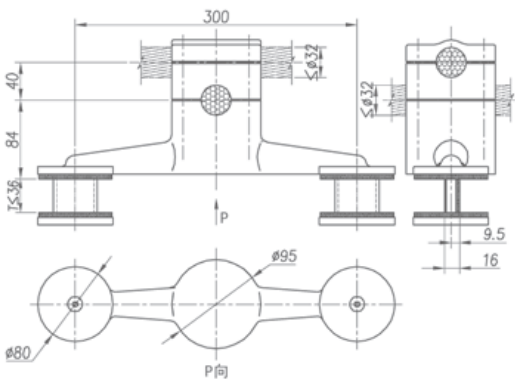
J300A32



J300B32



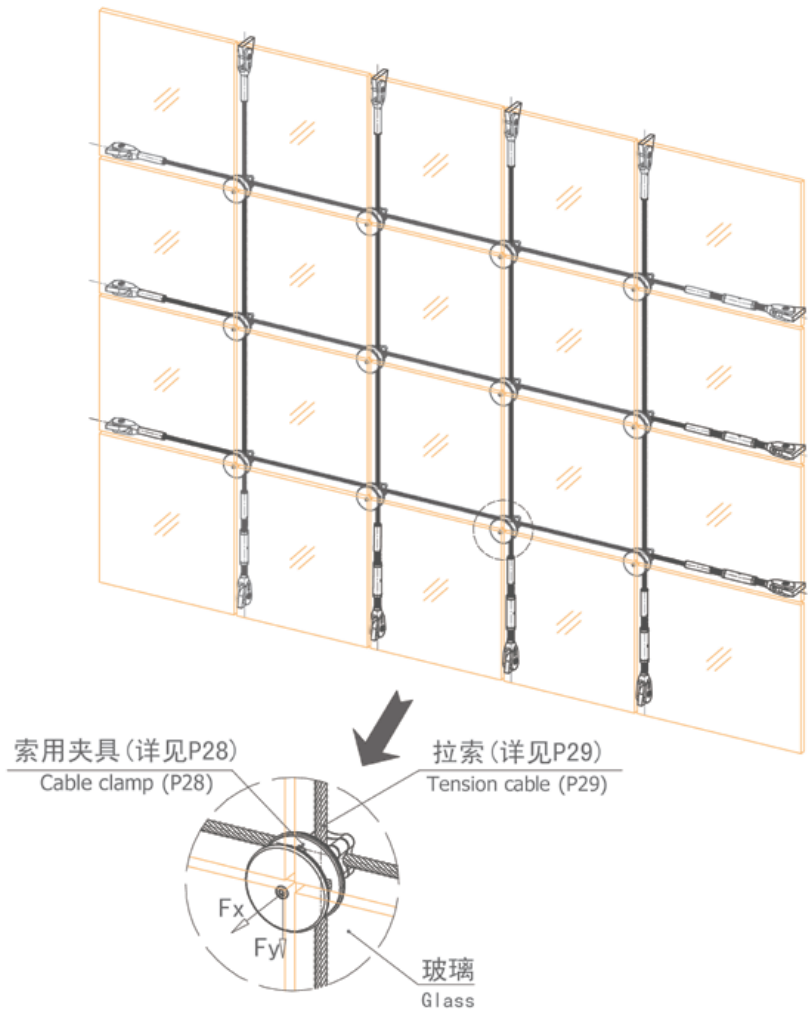
J300C32



承载力 推荐值 (N) The recommended value of bearing capacity(N)	型号 Model	J300A32	J300B32	J300C32
	Fx(轴向 Axial)≤	10000	10000	10000
	Fy(径向 Radial)≤	5000	5000	5000

单层索结构点支承玻璃幕墙系统
Single-Cable structure for point-fixed glass curtain wall system

系统构造 (三)
System structure (III)



图中 Fx、Fy 分别代表玻璃传递给点支配件的轴向力与径向力。
Fx and Fy represent axial and radial forces which the glass pass to point-fixed accessories.

索用夹具尺寸及承载力参数

- The size and bearing capacity parameter of the cable clamp



承载力 推荐值 (N) The recommended value of bearing capacity(N)	型号 Model	J120A31	J120B31	J150A31	J152A31	J160A31
	Fx(轴向 Axial)≤	20000	20000	20000	20000	20000
	Fy(径向 Radial)≤	3000	3000	4000	4000	4000

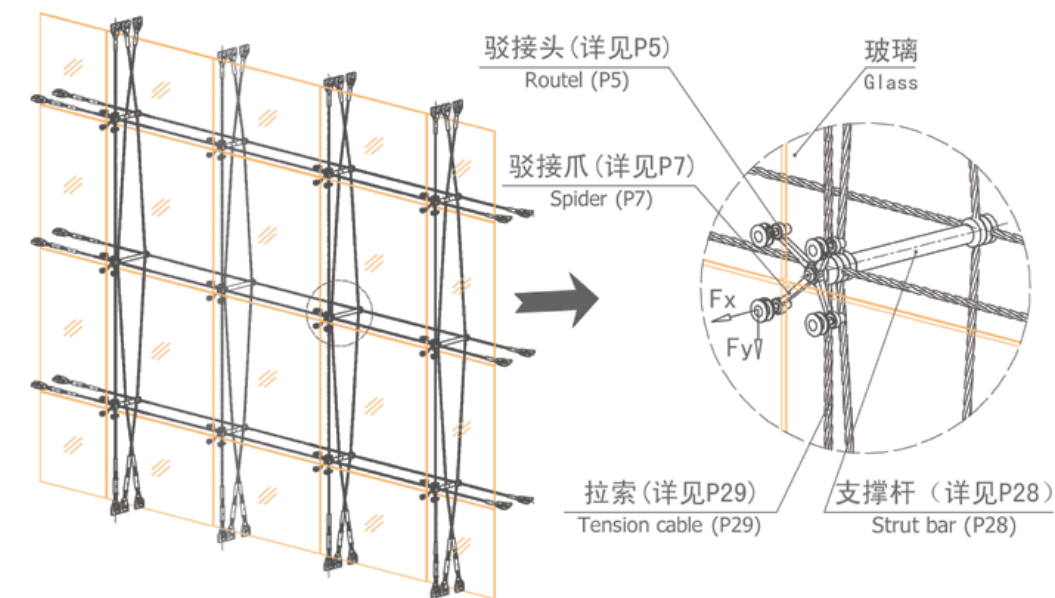
索桁架结构点支承玻璃幕墙系统

Cable truss structure for point-fixed glass curtain wall system



系统构造

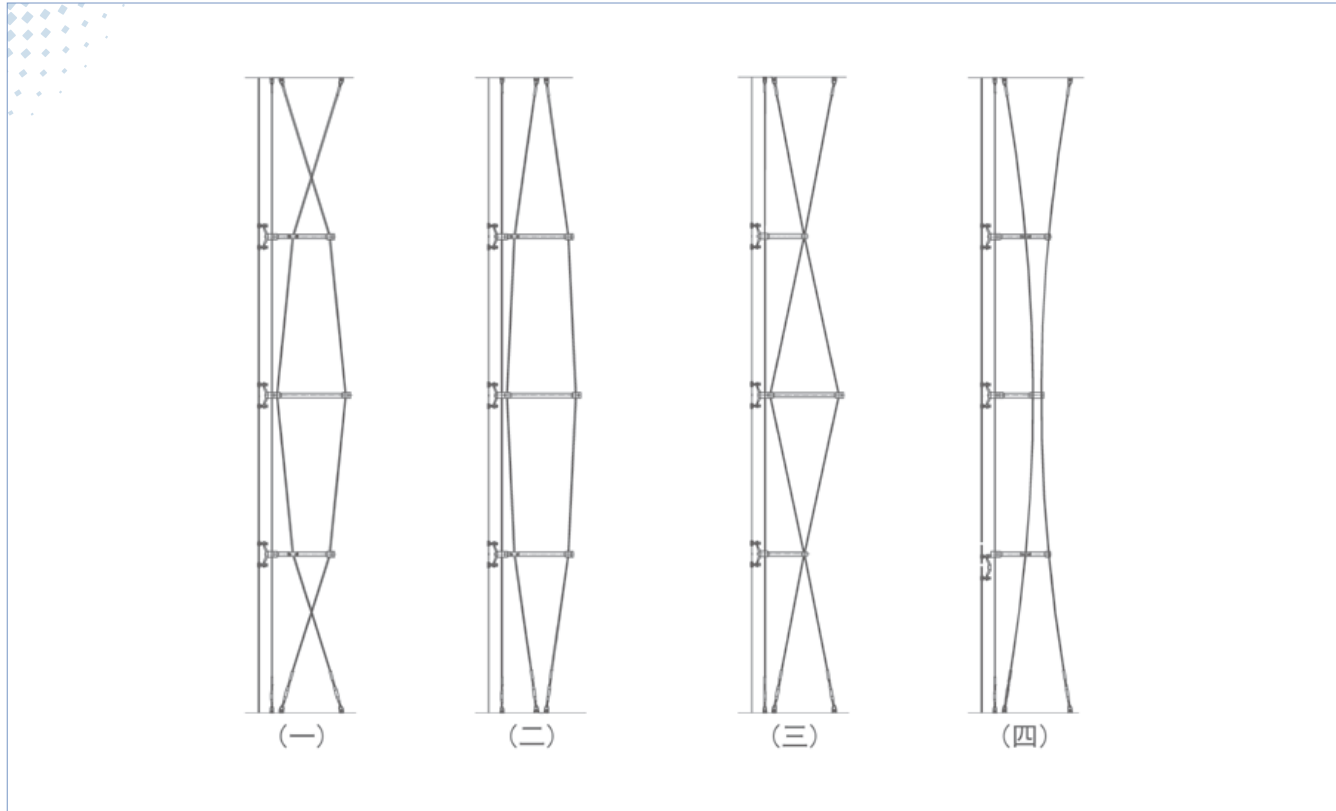
System structure



图中 F_x 、 F_y 分别代表玻璃传递给点支配件的轴向力与径向力。

F_x and F_y represent axial and radial forces which the glass pass to point-fixed accessories.

布索形式
Common styles of cable system



SSA-11

SSA-12

SSA-21

SSA-41

注：支撑杆压块外径 ØA 有 Ø65 和 Ø75 两种规格，具体大小应根据所配用拉索索径确定。
支撑杆连接套管 ØB 有 Ø50X5 和 Ø60X8 两种规格，具体大小应根据计算确定。

Note: 1. There are two specifications of the outside diameter ØA of the strut's lock block: Ø65 and Ø75 ,the exact dimension is based on the cable's diameter.
2. There are two specifications of the joint sleeve ØB of the strut: Ø50×5 and Ø60×8 the exact dimension is based on the calculation .

不 锈 钢 拉 索
Stainless steel tension cable

- 材质说明
Raw material description
- ◇ 钢绞线 Stainless steel strand: 316、304 (ASTM A276 S31600、S30400)
 - ◇ 索锚具 Swaged end with adjustor: 316、304 (ASTM A276 S31600、S30400)
 - ◇ 索头 Anchor: CF8M、CF8 (ASTM A743/A743M)
 - ◇ 其余 Other: 请咨询坚朗公司 (Please consult KIN LONG company)

- 技术性能
Technical performance
- ◇ 压制头拉索截面参数与力学性能（材质：316、304）
Parameters and mechanical properties of cable swaged end(material:316 、304)

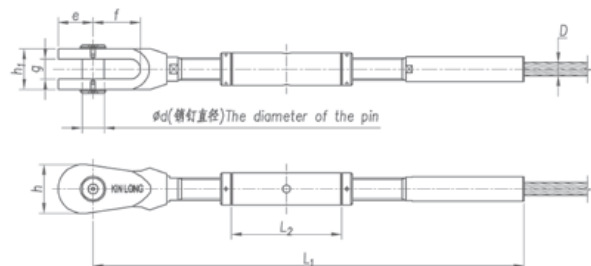
钢索直径 (mm) Cable Diameter (mm)	参考结构 Reference Configuration	钢丝直径 (mm) Steel Wire Diameter (mm)	金属新积 (mm²) Sectional Area (mm²)	钢索最小破断拉力 (kN) Minimum Breaking Strength (kN)	弹性模量 (10⁵N/mm²) Modules Elasticity (10⁵N/mm²)
8	1x19	1.60	38.20	43.87	1.30 ± 0.10
10		2.00	59.69	68.55	
12		2.40	85.95	98.71	
14		2.80	116.99	134.35	
16	1x37	3.20	152.81	175.48	
16		2.29	152.39	175.00	
18		2.57	192.15	218.16	
20		2.86	237.22	269.33	
22	1x61	2.44	286.27	325.02	
24		2.67	340.69	386.80	
26		2.89	399.84	453.95	
28		3.11	463.71	526.48	
30	1x91	2.73	531.60	603.56	
32		2.91	604.85	686.71	
34		3.09	682.82	775.24	
36		3.27	765.51	869.12	
38		3.45	852.93	968.37	
40		3.64	945.07	1072.99	

注：如客户有需求，可生产其他强度拉索，详情请咨询坚朗公司。
Note: If it is required, we can manufacture tension cable with other different strength, welcome to contact KINLONG for more details .

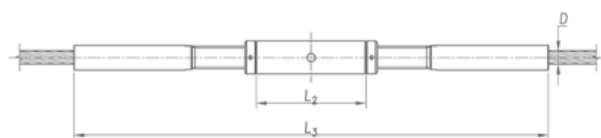
产品型号

Product model

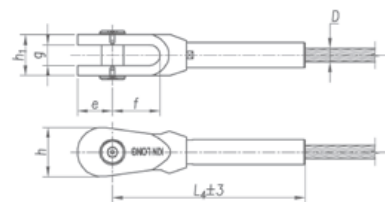
AC01 (调节端 Adjustable swaged end)



MC01 (中间调节套 Adjustable center connector)



BC01 (固定端 Fixed swaged end)



规格尺寸 Specification

D	d	g	h ₁	e	f	h	L ₁	L ₂	L ₃	L ₄
Ø8	14	13	26	23	30	32	≤290	80	≤314	119
Ø10	16	15	30	26	34	36	≤312	80	≤352	143
Ø12	20	18	36	32	42	44	≤453	125	≤497	178
Ø14	22	20	40	36	46	50	≤482	125	≤539	204
Ø16	27	25	50	43	58	60	≤528	135	≤582	235
Ø18	30	27	54	48	65	68	≤557	135	≤619	267
Ø20	33	29	58	53	74	76	≤694	180	≤751	291
Ø22	33	32	64	53	74	76	≤715	180	≤793	308
Ø24	36	34	68	58	80	82	≤746	185	≤833	332
Ø26	39	37	74	62	88	88	≤774	185	≤866	363
Ø28	42	40	80	67	94	96	≤808	190	≤900	385
Ø30	45	42	84	72	100	102	≤968	235	≤1076	413
Ø32	50	45	90	77	106	110	≤985	235	≤1101	433
Ø34	52	49	98	84	114	120	≤1032	240	≤1146	464
Ø36	56	52	104	90	122	128	≤1066	245	≤1189	492
Ø38	60	55	110	96	128	136	≤1220	260	≤1450	630
Ø40	62	58	115	100	134	143	≤1300	280	≤1546	665

产品型号

Product model

型号: EC02 (螺杆端 Screw terminal)



规格尺寸 Specification

D	Ø8	Ø10	Ø12	Ø14	Ø16	Ø18	Ø20	Ø22	Ø24	Ø26	Ø28	Ø30	Ø32	Ø34	Ø36	Ø38	Ø40
M	M14	M16	M20	M22	M27	M30	M33	M33	M36	M39	M42	M45	M48	M52	M56	M60	M64
L ₁	50	52	79	83	87	88	121	126	127	127	130	175	175	182	185	190	200
L ₂	124	144	196	218	237	257	302	323	342	360	376	443	457	479	500	630	665

注: 如客户自配螺母, 请先咨询我司螺纹螺距。

Note: If you choose screw nut by yourself, please consult Kinlong's thread pitch in advance.

订货须知

Order information

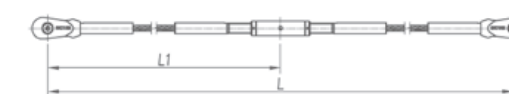
样式一 Type I: AC01-BC01



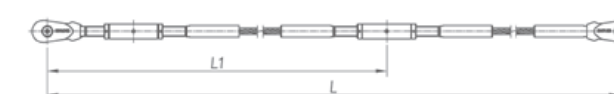
样式二 Type II: AC01-AC01



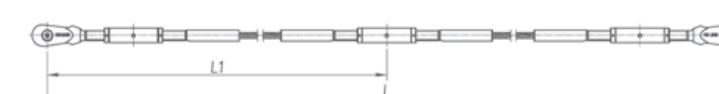
样式三 Type III: BC01-MC01-BC01



样式四 Type IV: AC01-MC01-BC01



样式五 Type V: AC01-MC01-AC01



用户订购该产品时, 其产品长度为上图中两销钉中心距的尺寸(L)。

用户订购该产品时, 需提供索施工时的预拉力值。

用户订购该产品时, 如产品产品长度(L) 过长, 需咨询坚朗公司是否需要增加调节套。

Ø8 及 Ø10 钢索的索锚具压制外形为六角形。

L is the length as your requirement (L means pin to pin)

When purchasing this product, please supply the pretension of cable on site

When purchasing this product, if L is too long, please consult Kin Long team to add adjustable connector.

For Ø8 and Ø10 cable, the anchor is hexagon

不锈钢拉杆
Stainless steel tension rod



材质说明
Raw material description

- ◇ 杆体 Rod: 316、304 (ASTM A276 S31600、S30400)
- ◇ 索头 Anchor: CF8M、CF8 (ASTM A743/A743M)
- ◇ 其余 Other: 请咨询坚朗公司 (Please consult KIN LONG company)

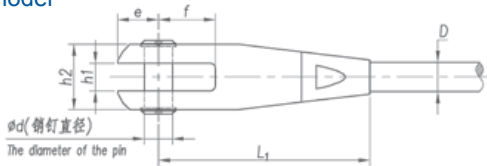
技术性能
Technical performance

- ◇ 拉杆特性参数与力学性能(材质: 316、304)
The characteristic parameters and mechanical properties of tension rod (material:316、304)

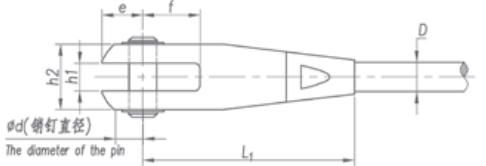
序号 NO.	杆端螺纹 (mm) Thread diameter (mm)	拉杆的有效截面积 (mm²) Effective section area (mm²)	屈服强度 (MPa) Yield strength (MPa)	抗拉强度 (MPa) Tensile strength (MPa)	伸长率 (%) Elongation (%)
1	M10	57.99	515	650	≥25
2	M12	84.27			
3	M14	115.44			
4	M16	156.67			
5	M18	192.47			
6	M20	244.79			
7	M22	303.40			
8	M24	352.50			
9	M27	459.40			
10	M30	560.59			
11	M33	693.60			
12	M36	816.72			

产品型号

Product model



M22 及 M22 以下销钉为卡簧固定
Pin will be fixed thru snap spring if the diameter d≤M22



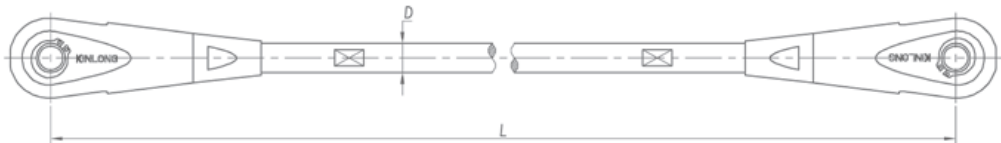
M22 以上销钉为螺钉固定
Pin will be fixed thru screw if the diameter d>M22

规格尺寸 Specification

型号 model	螺纹公称直径 OD of screw	D	e	f	h ₁	h ₂	L ₁	d	单边调节量 Single side adjustment capacity
Q01A-10	M10	Ø9	18	23	11	26.5	100	Ø13	±12.5
Q01A-12	M12	Ø10.8	18	23	11	26.5	100	Ø13	
Q01A-14	M14	Ø12.6	20	25	13	31	108	Ø15	
Q01A-16	M16	Ø14.6	23	28	15	35	117	Ø16	
Q01A-18	M18	Ø16.3	25	35	17	40	130	Ø18	±14
Q01A-20	M20	Ø18.3	30	35	17	42.5	138	Ø20	
Q01A-22	M22	Ø20.3	32.5	42	21	47	148	Ø22	
Q01A-24	M24	Ø24	38	48	21	53	170	Ø24	
Q01A-27	M27	Ø27	42	52	25	60	182	Ø27	±17.5
Q01A-30	M30	Ø30	46	60	25	65	195	Ø30	
Q01A-33	M33	Ø33	49.5	65	27	68	205	Ø33	
Q01A-36	M36	Ø36	56.5	72	29	76	220	Ø37	
Q01B-10	M10	Ø9	16.5	23	11	21	58	Ø13	±5
Q01B-12	M12	Ø10.8	18.1	23	11	23	61	Ø13	
Q01B-14	M14	Ø12.6	19.9	25	13	28	66	Ø15	
Q01B-16	M16	Ø14.6	22.7	28	15	32	76	Ø16	
Q01B-18	M18	Ø16.3	26	35	17	35	84	Ø18	
Q01B-20	M20	Ø18.3	28.7	35	17	37	89	Ø20	
Q01B-22	M22	Ø20.3	31.6	42	21	45	103	Ø22	
Q01B-24	M24	Ø24	33.2	48	21	47	110	Ø24	
Q01B-27	M27	Ø27	37.8	52	25	54	123	Ø27	
Q01B-30	M30	Ø30	42.5	60	25	56	134	Ø30	
Q01B-33	M33	Ø33	47.5	65	27	62	147	Ø33	
Q01B-36	M36	Ø36	50.8	72	29	68	160	Ø37	

订货须知

Order information



用户选购改产品时，其产品长度为上图中两销钉中心距的尺寸。
L is the length as per client's requirement. (L is pin to pin distance) .



坚朗[®] KIN LONG[®]

PRODUCT WORLD

坚朗产品世界
CONSTRUCTION HARDWARE EXPERT

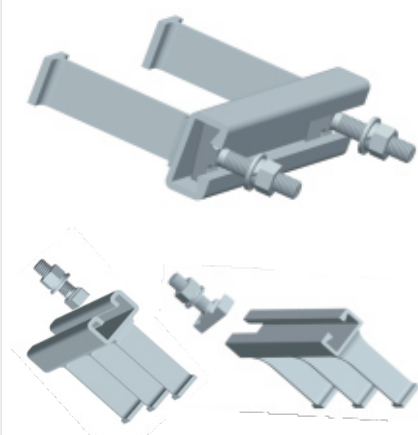
Point--fixed Glass Wall Fitting
点支式玻璃幕墙配件



S.S Tension Cable&Tension Rod
不锈钢拉杆拉索系列



As-in Channel Accessory
槽式预埋件系列



S.S Post Railing System
不锈钢护栏系列



Micro S.S Cable System
微型不锈钢索系列



Door Control Hardware Fitting
门控五金配件



Bathroom Hardware Accessory
卫浴五金配件系列



Mechanical lock Series
机械门锁系列



Smart Door Lock
智能门锁系列



Aluminum Door&Window Accessory
铝门窗五金配件系列



U Groove Door&Window Accessory
U槽五金配件系列



Friction Stayand Pegstay Series
滑撑、风撑系列

